

# *Judges Special Award*

- © Danielle Meyer, Denver, Co

# Pagoda, Destination Boutique Hotel

IMAGINE FOR A MOMENT THAT YOU HAVE JUST ARRIVED TO THE MOUNTAINS OF TELLURIDE, COLORADO, WHERE YOUR MUCH ANTICIPATED VACATION IS ABOUT TO BEGIN. WHETHER IT IS WINTER OR SUMMER, THIS AREA HAS LONG BEEN CELEBRATED FOR ITS 360 DEGREE MOUNTAIN VIEWS, OUTRAGEOUS CELEBRITY SIGHTINGS, SUMMER JAZZ FEST, AND EVERY TYPE OF OUTDOOR ACTIVITY IMAGINABLE.

YOU ARE EXCITED TO BE STAYING IN TELLURIDE'S NEWEST HOTEL, WHICH YOU HAVE HEARD IS NOTHING LIKE THE TYPICAL "MOUNTAIN RUSTIC" RESORTS IN THE AREA. THIS NEW HOTEL HAS ALL THE LUXURIES OF THE FINEST DAY SPA AND A SWANK, SOPHISTICATED STYLE NOT OFTEN FOUND IN MOUNTAIN TOWNS.

AS YOU ROUND THE LAST CURVE UP THE MOUNTAIN ROAD, YOU SPOT IT--THE SHARP CORNER OF A LARGE POINTED ROOF POKING OUT ABOVE THE ASPEN AND PINE TREES. A FOUR-STORY WATERFALL GRACEFULLY POURS DOWN THE FRONT ENTRANCE INTO A REFLECTING POOL. YOU HAVE ARRIVED. WELCOME TO PAGODA, A DESTINATION BOUTIQUE HOTEL.

## DESIGN INTENT

CREATE A DESTINATION BOUTIQUE HOTEL UNLIKE ANY IN THE WORLD. TRANSFORM TRADITIONAL ASIAN CONCEPTS INTO MODERN DESIGN ELEMENTS THAT RESULT IN MOMENTS OF MAGNIFICENCE. PROVIDE AN INTIMATE YET EXCITING STAY FOR GUESTS WITH AMENITIES THAT BRING IN TRAVELERS FROM AROUND THE GLOBE.

DESIGN SPACES THAT REFLECT A CONTEMPORARY ASIAN ESSENCE USING FINISHES, FIXTURES, FURNITURE, LIGHTING, FABRIC AND FLOORING TO CREATE MEMORABLE FOCAL POINTS AND AN INNOVATIVE DESIGN.

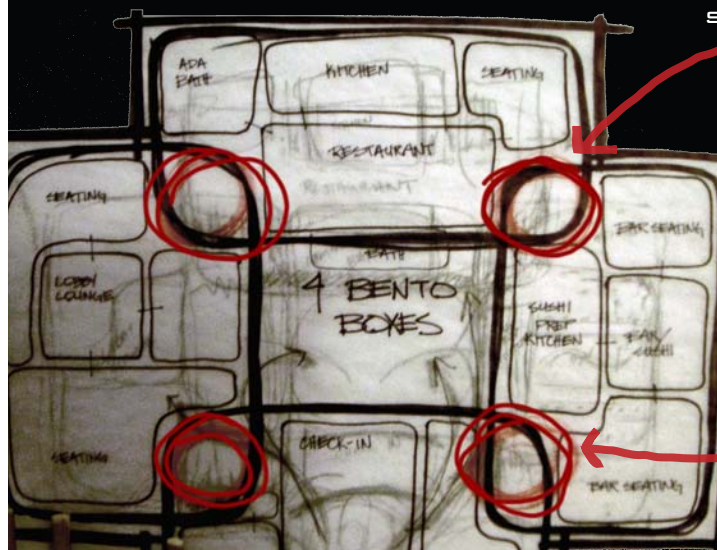
## BENTO BOX CONCEPT

THE CONCEPT FOR THIS DESIGN IS BASED ON A BENTO BOX, WHICH CREATES COMPARTMENTS OF INTERESTING SPACES WITHIN THE HOTEL AND THE SURROUNDING PROPERTY. THE LAYOUT OF THE MAIN BUILDING IS BASED ON FOUR BENTO BOXES WHOSE CORNERS OVERLAP. IN EACH OVERLAPPING CORNER, FLOOR TO CEILING GLASS TUBES FILLED WITH JELLYFISH PUNCTURE THE SPACE. AS COLORED LED LIGHTS SHINE INTO EACH TUBE FROM THE TOP AND BOTTOM, THE JELLYFISH ABSORB THE COLORS ADDING DRAMA AND INTRIGUE TO THIS INNOVATIVE DESIGN FEATURE.

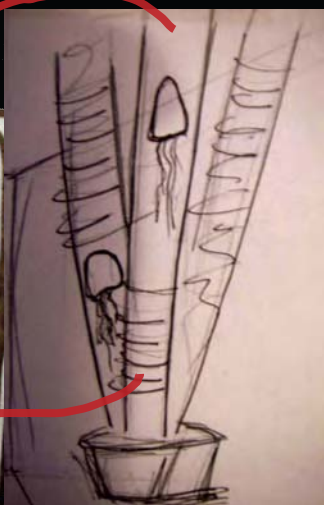
THE 40,000 SQUARE FOOT BOUTIQUE HOTEL FOR ADULT ONLY GUESTS, WILL BE BUILT IN TELLURIDE DUE TO THE TOWN'S INCREDIBLY STRONG YEAR-ROUND ECONOMY, THE HIGH-END CLIENTELE TO WHICH THE TOWN ALREADY CATERS AND THE NEED FOR A CONTEMPORARY LODGING FACILITY, RESTAURANT, SUSHI LOUNGE, SPA, AND ROOFTOP BAR THAT WILL APPEAL TO BOTH HOTEL GUESTS AND LOCALS .



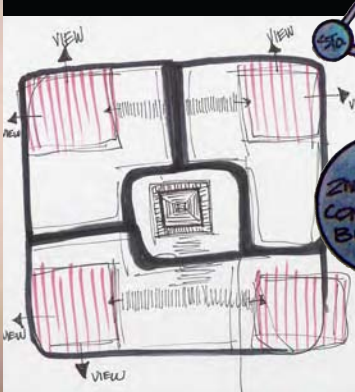
SCHEMATIC DIAGRAM,  
LOBBY WITH BENTO BOX CONCEPT



SKETCH, JELLYFISH TUBES



SCHEMATIC DIAGRAM,  
SITE PLAN



# Pagoda, Destination Boutique Hotel

## AREAS OF FOCUS:

### HOTEL ENTRY & CHECK-IN

FROM THE MOMENT GUESTS ARRIVE, PAGODA ESTABLISHES ITSELF AS A CASUAL, YET SWANK, SERVICE-ORIENTED HOTEL WITH AN UNMISTAKABLE JAPANESE ESSENCE. GUESTS PASS BEHIND THE 4-STORY WATERFALL INTO THE HOTEL'S ENTRANCE, WHERE THEY ARE IMMEDIATELY GREETED AND GIVEN THE OPTION TO EXCHANGE THEIR SNOW BOOTS OR SHOES FOR PADDED WOODEN SLIPPERS. AS THEY WALK TOWARDS THE REGISTRATION DESK, THEY PASS THROUGH A METAPHORICAL BAMBOO GARDEN. BAMBOO STALKS, LAID HORIZONTALLY ON THE WALLS, GUIDE GUESTS PAST A MODERN-DAY SHOJI SCREEN MADE OF FROSTED GLASS INTERSPERSED WITH PANELS OF LIVING GLASS CONTAINING PRESSED CHERRY BLOSSOMS AND REEDS. AHEAD, THE HAND-BLOWN GLASS CHANDELIER HANGS FLOOR TO CEILING, CREATING THE BUBBLES OF THE "COY POND." BEHIND THE REGISTRATION DESK, THE COY POND COMES TO LIFE. INSTEAD OF LOOKING DOWN INTO THE POND, THE FISH CAN BE VIEWED IN THREE HORIZONTAL STRIPS OF GLASS RIPPLING IN THE WOODEN DECK THAT FORMS A DRAMATIC BACKDROP TO THE HOTEL ENTRY. GUESTS THEN WALK LEFT PAST 3 GIANT GLASS JELLY FISH TUBES INTO THE LOBBY LOUNGE AND ELEVATOR BANK OR TO THE RIGHT INTO THE SUSHI BAR AND RESTAURANT.

### UNISEX LAVATORY

THIS SHARED BATHROOM HAS 2 NON-GENDER SPECIFIED ENTRANCES THAT CURVE AROUND AND MEET IN AN OPEN SPACE CONTAINING SIX WATERCLOSETS AND A CUSTOM LAVATORY. THE WATERCLOSET DOORS ARE COMPOSED OF PRIVACY GLASS THAT FROSTS AS SOON AS THE LOCK IS TURNED. THE CUSTOM LAVATORY CONTAINS 5 SINKS INCLUDING ONE THAT MEETS ALL ADA REQUIREMENTS. THE ROOM'S FOCAL POINT IS THE ENORMOUS 3'-0" WIDE JELLYFISH TANK IN THE CENTER OF THE LAVATORY. PAGODA'S INNOVATIVE BATHROOM WILL BE THE TALK OF THE TOWN AND A SOUGHT AFTER EXPERIENCE FOR EVERY HOTEL GUEST.

### LOBBY LOUNGE

THE BENTO BOX CONCEPT TRULY COMES TO LIFE IN PAGODA'S LOBBY LOUNGE. WITH SPECTACULAR MOUNTAIN VIEWS, THE OPEN FLOOR PLAN IS MADE MORE PRIVATE AND INTIMATE BY CREATING MULTIPLE SEATING AREAS AT DIFFERENT LEVELS AND BREAKING UP THE SPACE WITH EYE-CATCHING FURNITURE AND LIGHTING.

TWO STEPS BELOW THE MAIN LEVEL OF THE LOBBY, AND CENTRALLY LOCATED IN THE LOUNGE, IS A POCKET OF THE BENTO BOX IN WHICH GUESTS CAN LOUNGE BY THE FIRE, SIP SAKE AND ENJOY SASHIMI 24 HOURS A DAY. FINE STRANDS OF LED THREADS HANG FROM THE SOFFIT ABOVE, CREATING A SEMI-TRANSPARENT CURTAIN OF PRIVACY FOR THE GUESTS INSIDE--AND ABSOLUTE INTRIGUE FOR PASSERSBY.

FLOOR TO CEILING DRUM PENDANTS SEPARATE THIS SPACE AND THE ADJACENT SEATING AREA. WHITE NATOUCHE CROCODILE WALL TILES SET A DRAMATIC BACKDROP FOR THE GLASS JELLYFISH TUBES AT THE FRONT AND BACK OF THE LOUNGE. COLORED LIGHTS SHINE INTO EITHER END OF THE GLASS TUBES RESULTING IN A LUMINESCENT JELLYFISH GLOW IN SHADES OF GREEN, BLUE, PINK, AND THEIR NATURAL WHITE.

### TEA HOUSE MASSAGE & GUEST SUITES

15 INDIVIDUAL GUEST SUITES AND 3 PRIVATE TEA HOUSES ARE CONNECTED BY WOODEN FOOT-PATHS THAT ARE HEATED IN THE WINTER AND ARE SITUATED JUST ABOVE LOTUS-FILLED PONDS IN THE WARMER SEASONS.

EACH GUEST SUITE HAS A SYSTEM OF NANA WALLS, DESIGNED TO LOOK LIKE SHOJI SCREENS, WHICH OPEN UP THE SUITE ON THREE SIDES TO UNOBSTRUCTED VIEWS OF THE AREA. EACH SUITE CONSISTS OF A LIVING SPACE TO SLEEP 1-5 GUESTS INCLUDING A FIREPLACE, STEAM SHOWER, HEATED FLOORS AND A BENTO BOX FILLED WITH AMENITIES SPECIFIED BY EACH GUEST SUCH AS AN IPOD DOCK, CUCUMBER SALT SCRUB, LEMONGRASS TRUFFLES, OR ONE OF 10 OTHER CHOICES.

THE TEA HOUSE MASSAGE SUITES ARE EQUIPPED WITH HEATED GRANITE MASSAGE TABLES, A PRIVATE JACUZZI THAT IS OPEN ON TWO SIDES TO NATURE, A PRIVATE SAUNA, AND A BENTO BOX FILLED WITH ESSENTIAL OILS, FLOWERS, CANDLES AND HOT STONES FOR USE DURING PRIVATE SPA TREATMENTS.

### "ON THE EDGE"

#### ROOFTOP POOL & BAR

JUST BELOW THE POINTED CORNERS OF PAGODA'S SIGNATURE ROOF SHELTER, GUESTS ARE ABLE TO INDULGE IN BREATHTAKING VIEWS OF THE MOUNTAINS OR STARS WHILE SIPPING SAKE IN THE INFINITY POOL. A CONTINUATION OF THE BENTO BOX CONCEPT, THE JACUZZI RESTS INSIDE THE POOL JUST A FEW SWIM STROKES FROM THE BAR. A 7'-0" WIDE COPPER FIRE BOWL IS THE FOCAL POINT, ELEVATED IN THE CENTER OF THE JACUZZI. A DIGITALLY IMPRINTED RESIN WALL CREATES THE STRIKING BACKDROP TO THE JACUZZI, WHILE GUESTS SEATED AT THE WATER BAR LOOK OFF INTO A BAMBOO GROVE.

THE WATER FROM THE INFINITY POOL APPEARS TO TOUCH THE MOUNTAINSIDE AS IT RUNS OFF THE EDGE OF THE ROOF. DROPPING FOUR-STORIES INTO THE REFLECTING POOL AT THE ENTRANCE TO THE HOTEL, THE WATER GREET'S NEW GUESTS ARRIVING TO EXPERIENCE PAGODA.

# Pagoda Hotel Entry



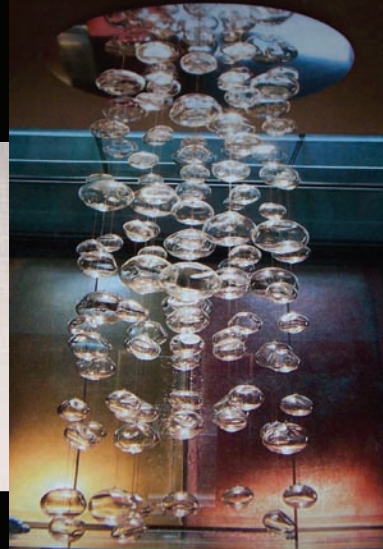
SKETCHUP PERSPECTIVE, HAND RENDERED



LIVING GLASS WALL PANELS

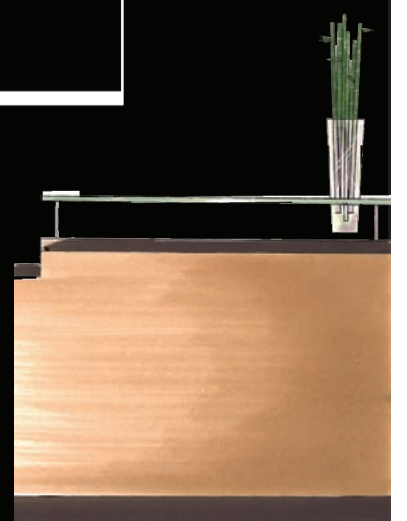
3FORM ECO RESIN WALL PANEL

EUROFASE BLOWN GLASS PENDANT



TERRAZZO FLOOR

HAND-SCRAPED WOOD FLOOR

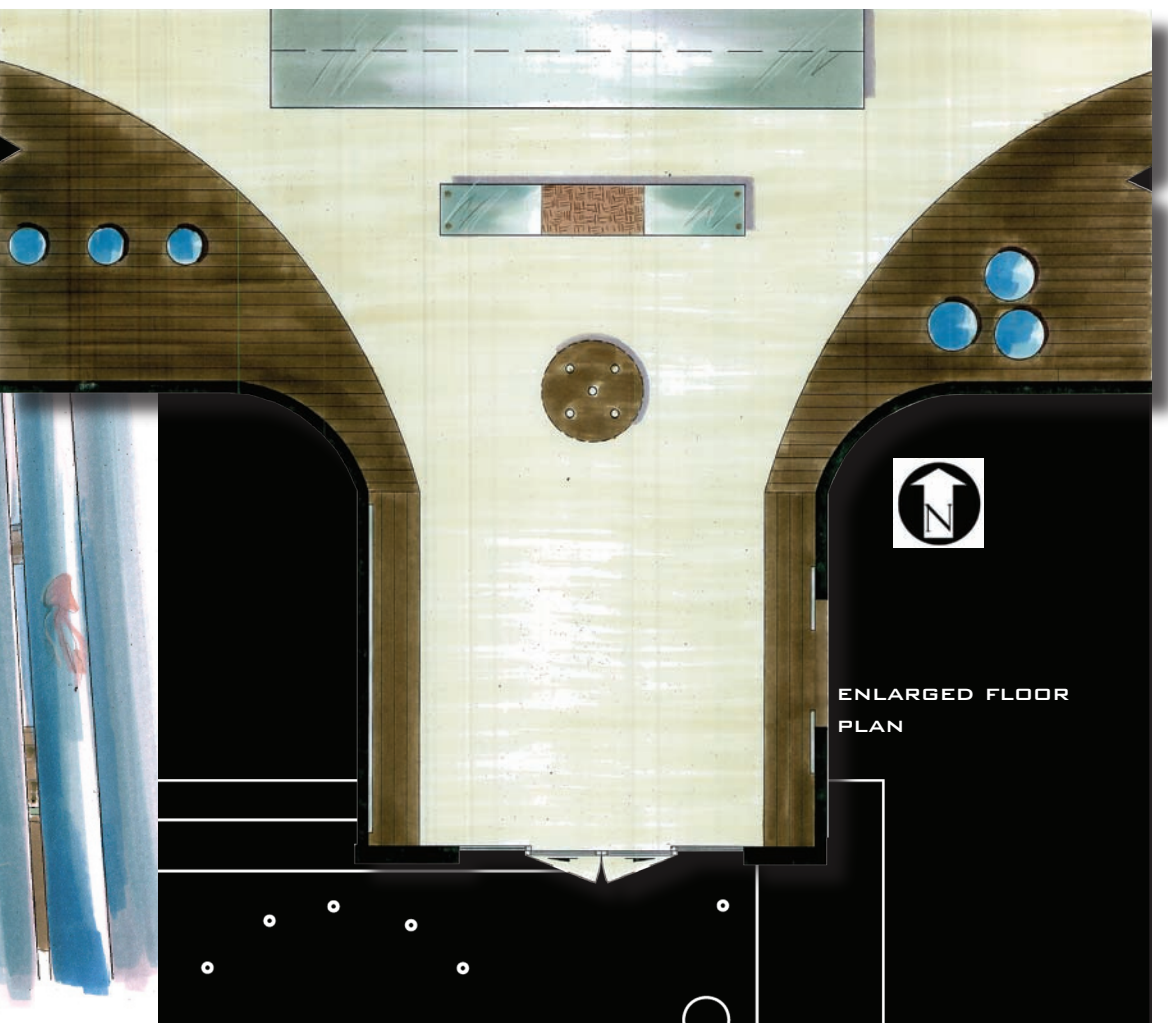


CUSTOM DESK DESIGN

WEST ELEVATION



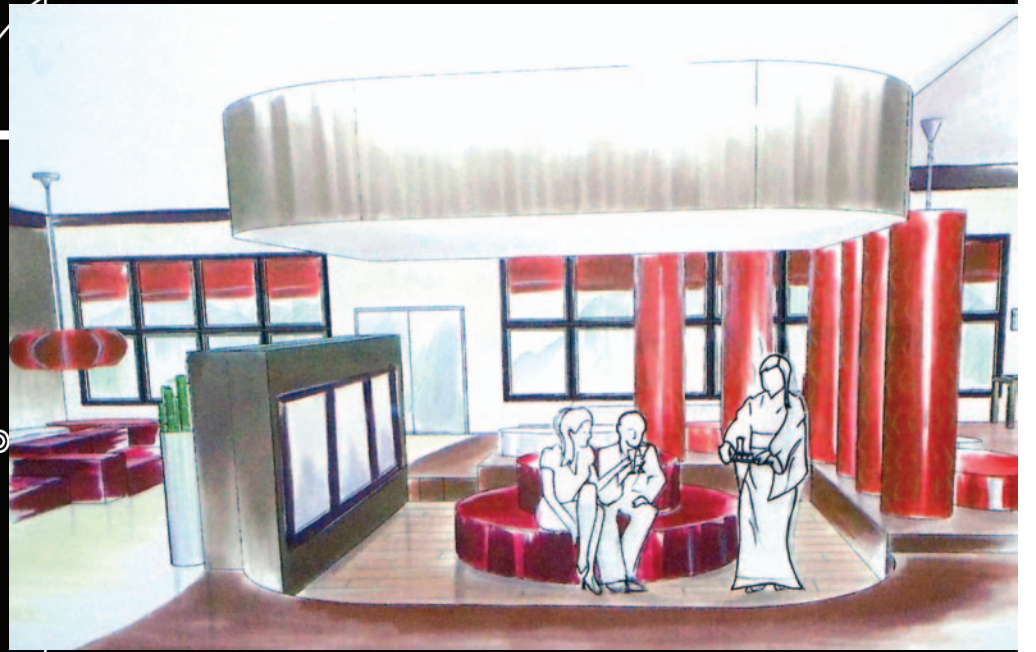
NORTH ELEVATION, HORIZONTAL COY PONDS & WOOD DECK



ENLARGED FLOOR PLAN

# Lobby Lounge

SUSHI SERVED 24-HOURS A DAY!



DFORM FLOOR-TO-CEILING DRUM PENDANTS

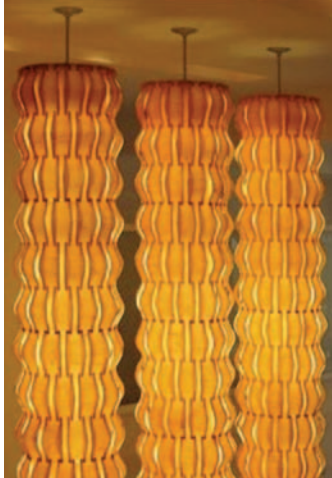
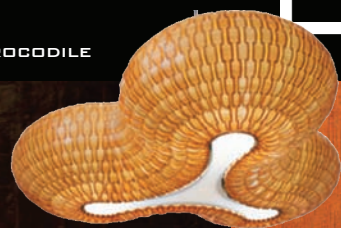
MATOUCHE CROCODILE WALL TILE

KRAVET ULTRASUEDE UPHOLSTERY

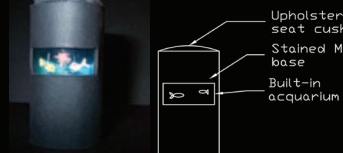
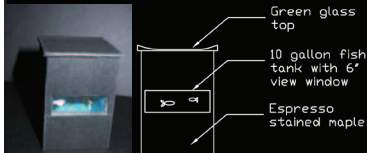
SPARKFIRE RIBBON FIREPLACE

ROBERT ALLEN SOFA UPHOLSTERY

SCHUMACHER TEXTILE CUSTOM DRAPERIES

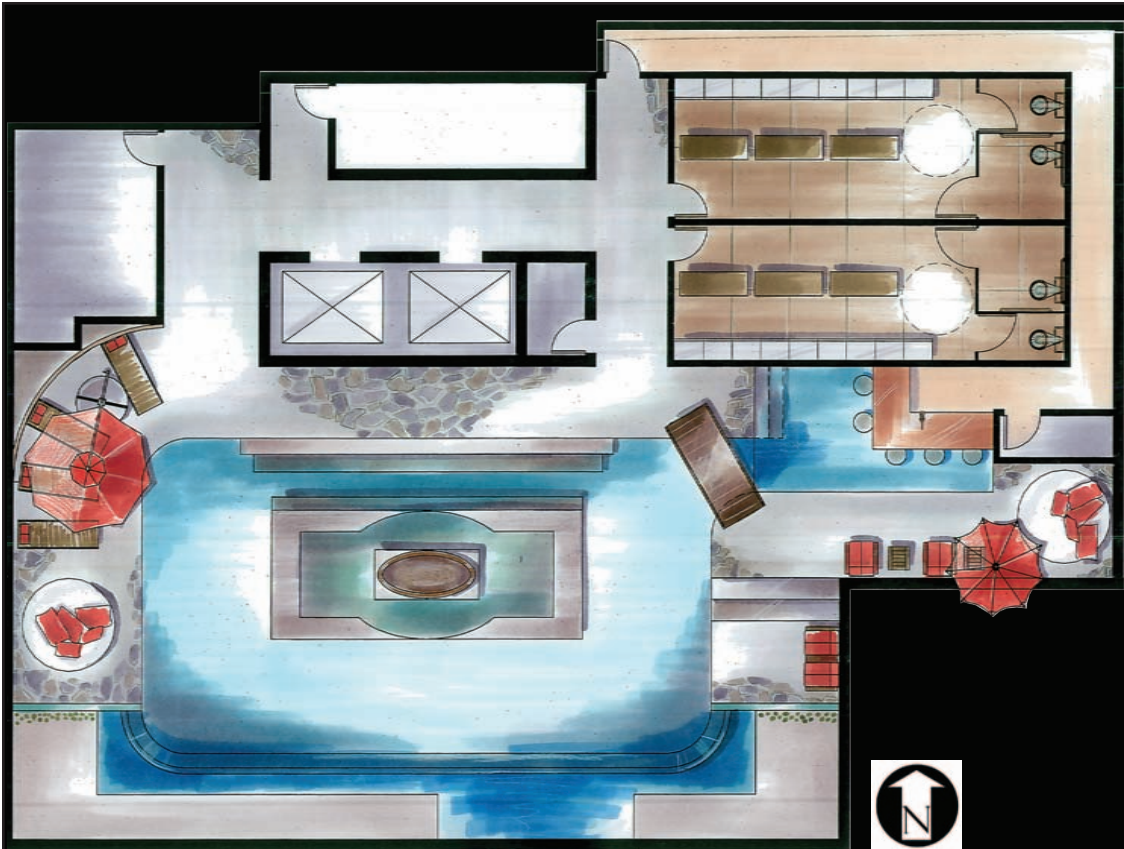


CUSTOM DESIGNED FURNITURE PIECES



SOUTH ELEVATION





ROOFTOP POOL FLOOR PLAN

# On the Edge Rooftop Pool & Bar

KRAVET PILLOW AND UMBRELLA  
UPHOLSTERY

KRAVET SOLEIL  
ROUND SOFA UPHOLSTERY

KRAVET SOLEIL  
THROW PILLOWS

PETRA SLATE FLOORING

7' WIDE  
CUSTOM  
COPPER  
FIRE  
BOWL  
INSIDE  
JACUZZI



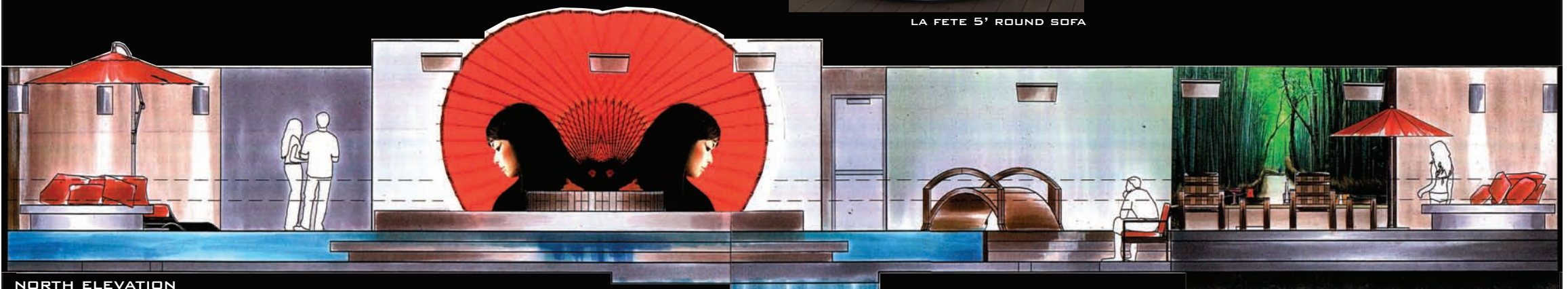
LA FETE 5' ROUND SOFA



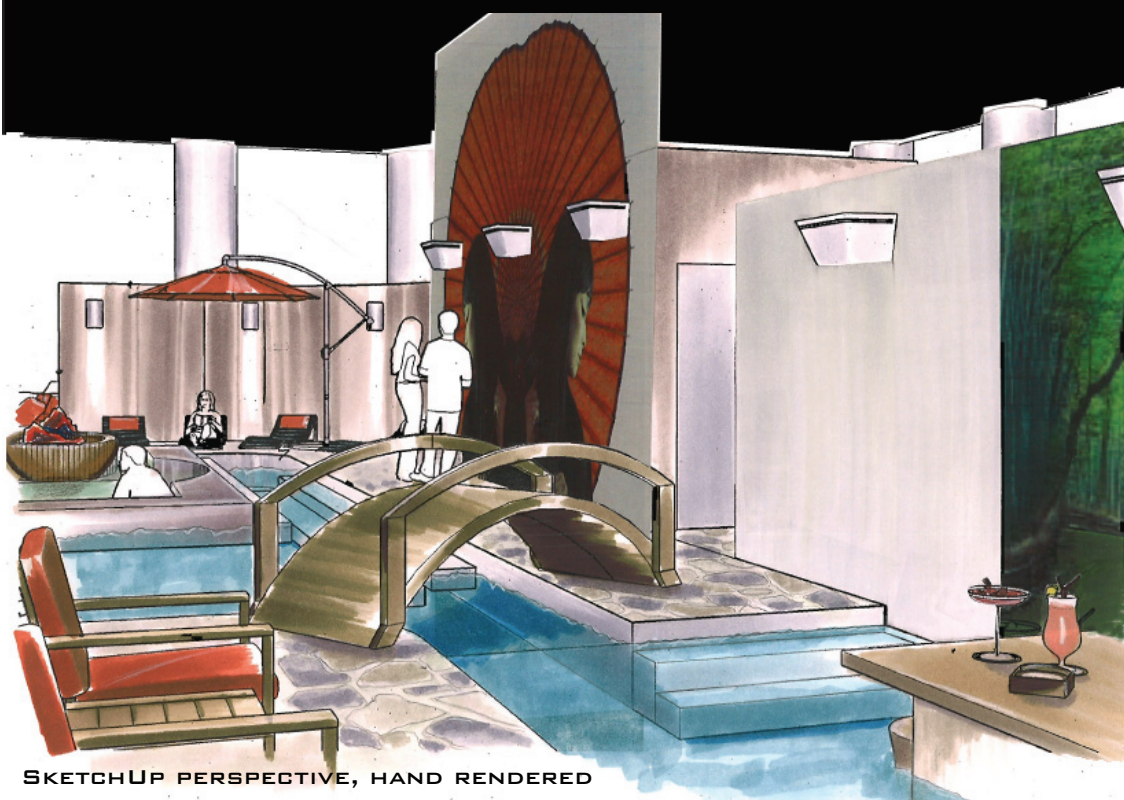
METAL HALLIDE PENDANTS



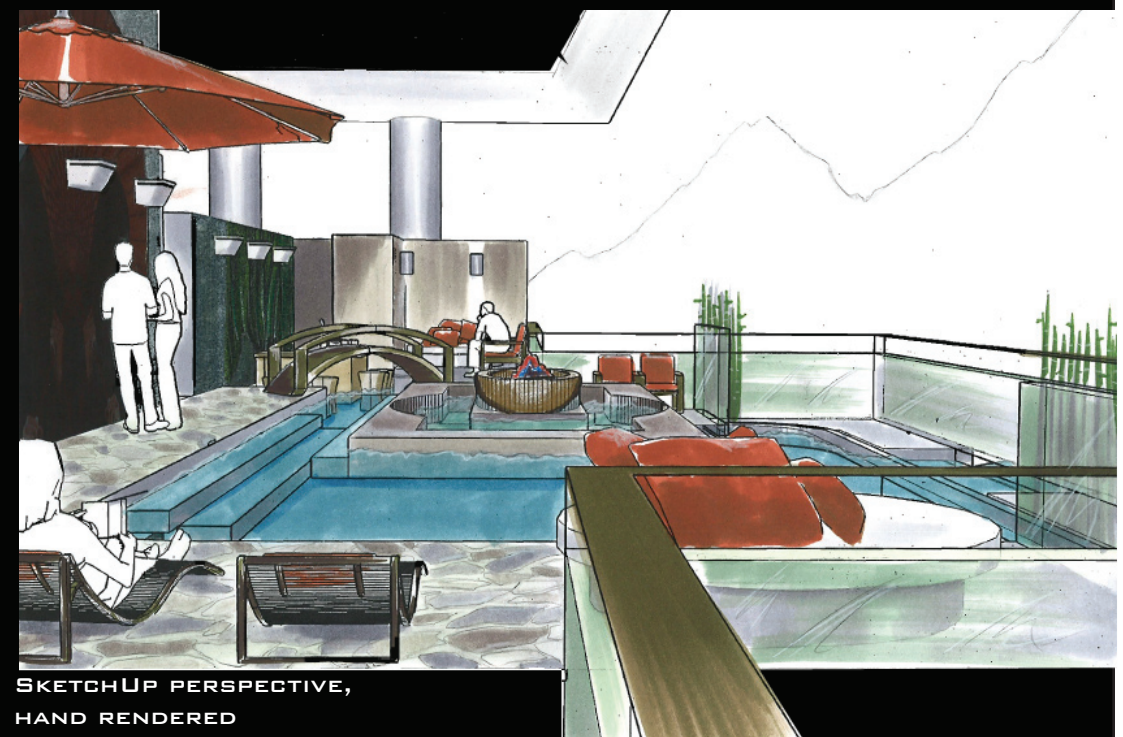
TACCHINI SLALOM CHAIR



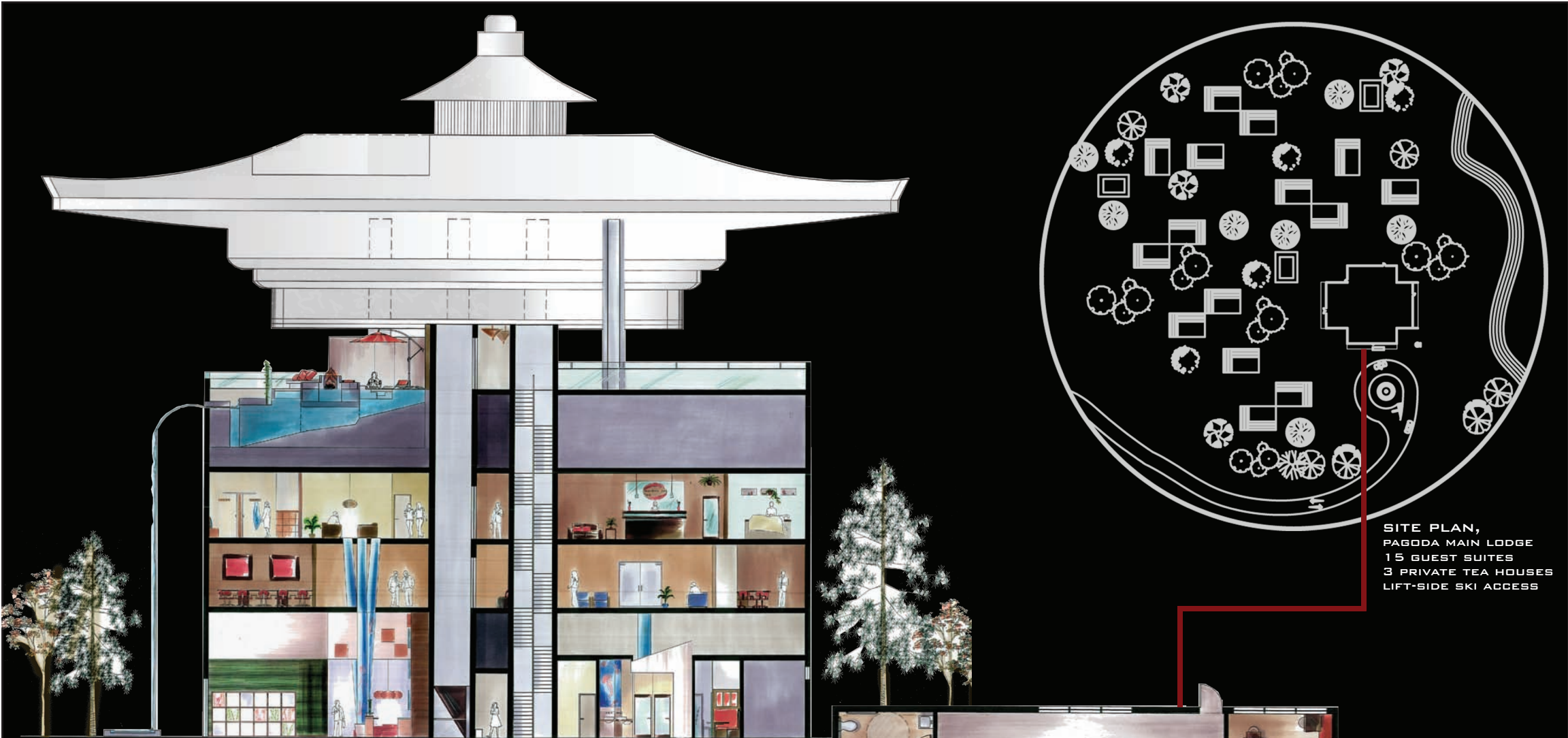
NORTH ELEVATION



SKETCHUP PERSPECTIVE, HAND RENDERED



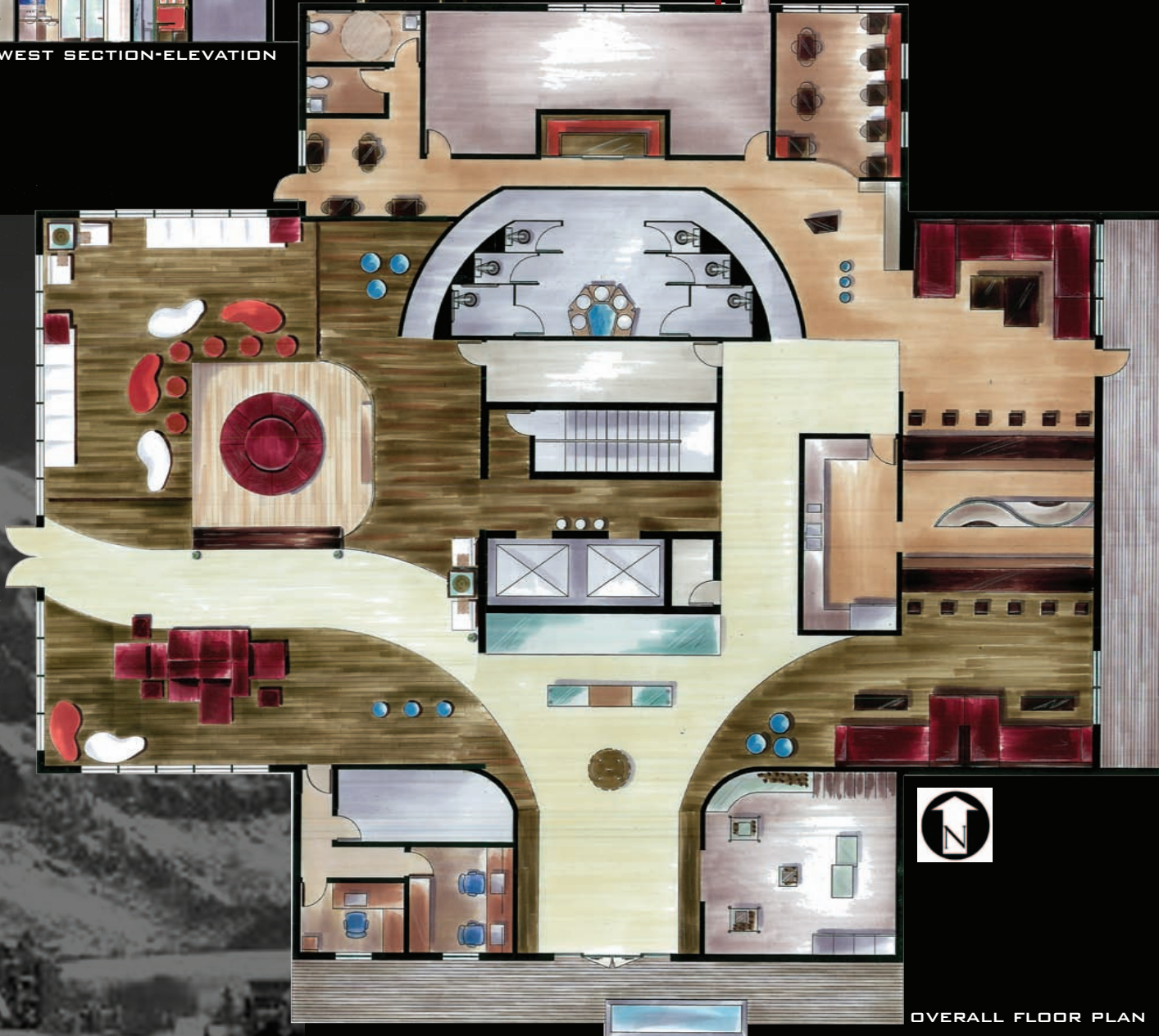
SKETCHUP PERSPECTIVE,  
HAND RENDERED



EAST-WEST SECTION-ELEVATION

SITE PLAN,  
 PAGODA MAIN LODGE  
 15 GUEST SUITES  
 3 PRIVATE TEA HOUSES  
 LIFT-SIDE SKI ACCESS

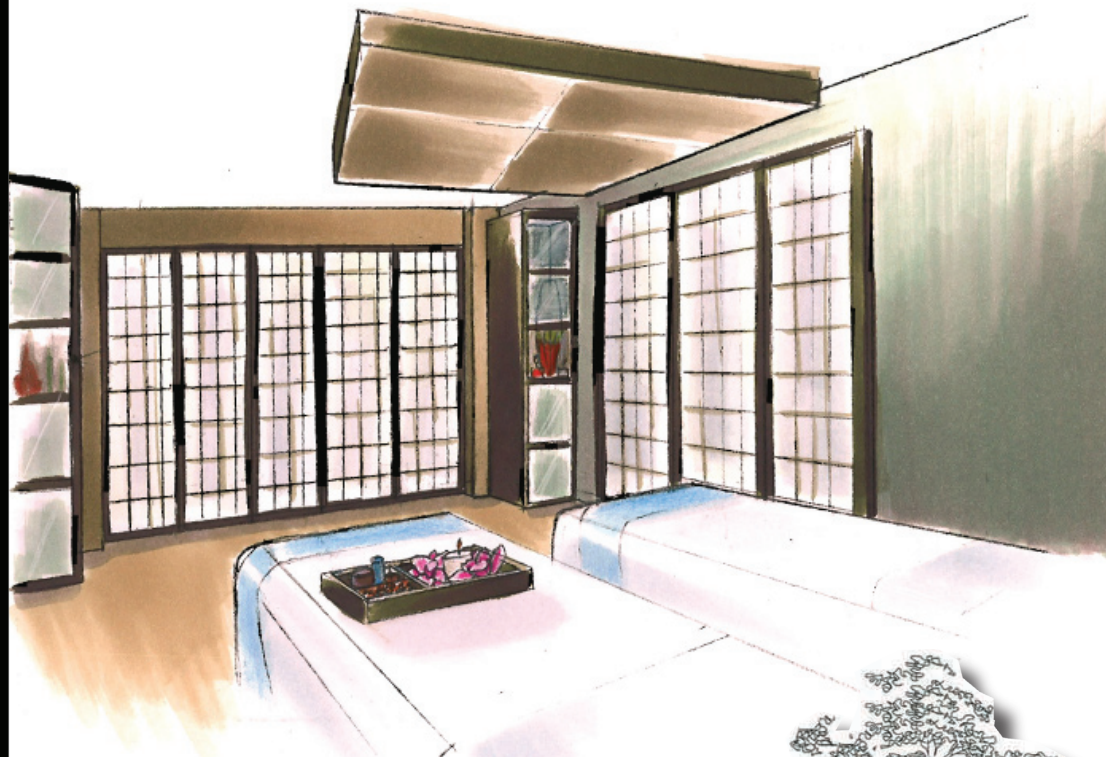
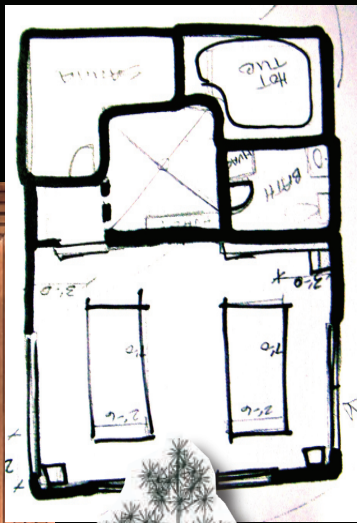
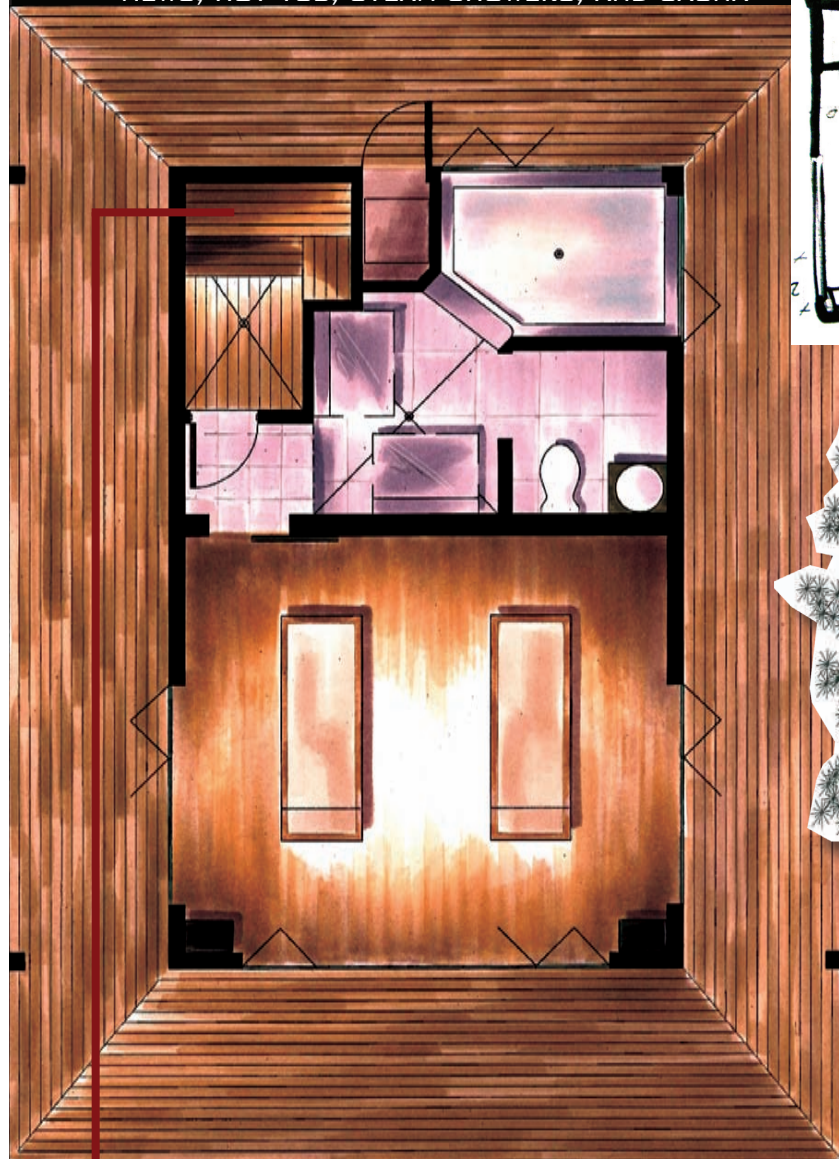
PAGODA, A 40,000 SQUARE FOOT DESTINATION BOUTIQUE HOTEL IS NESTLED IN THE ASPENS AND PINES JUST OUTSIDE OF TELLURIDE, COLORADO. UNLIKE THE OTHER 7 HOTELS AND INNS IN TOWN WHOSE DECOR TAKES ON A "RUSTIC MOUNTAIN DECOR," PAGODA HAS A STYLISH SOPHISTICATION NOT OFTEN FOUND IN THE MOUNTAINS.



OVERALL FLOOR PLAN

# Tea House Massage Suite

PRIVATE SPA TREATMENTS WITH OUTDOOR  
VIEWS, HOT TUB, STEAM SHOWERS, AND SAUNA



SKETCHUP PERSPECTIVE

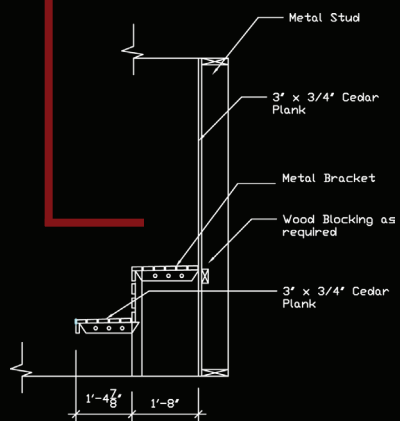


NORTH SECTION ELEVATION



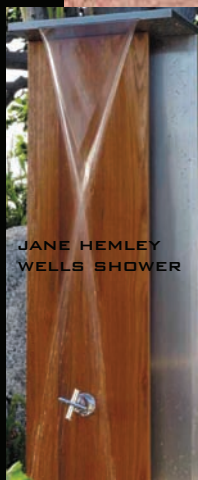
FLOOR PLAN

NORTH ELEVATION



EAST ELEVATION

GRANITE MASSAGE BED



JANE HEMLEY  
WELLS SHOWER

ANN SACKS TILE  
FLOORING

AGNESS & HOSS  
SCONCE



CORK FLOORING

EXTERIOR WATERCOLOR RENDERING

